

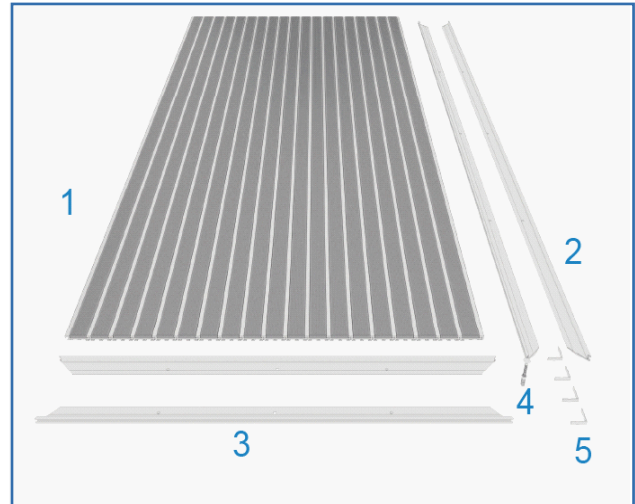
Installation Instructions



Model (URFM-24)

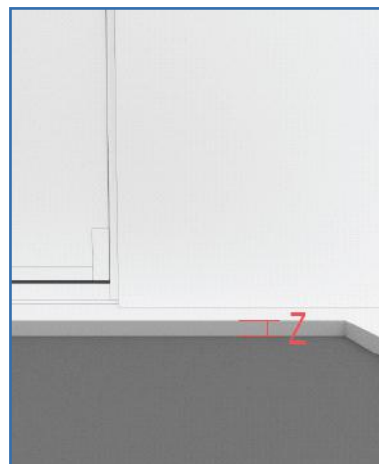
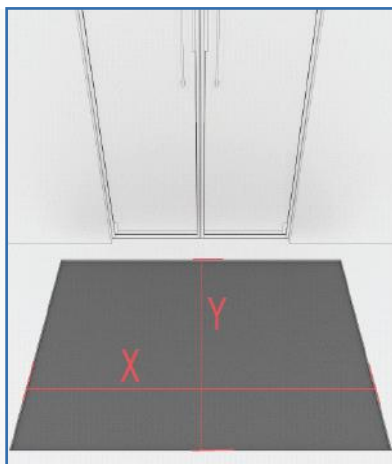
Step 1: Entrance Mat Material Inspection & Verification at Site

1. Confirm the arrivals of all components to site work in well and good condition
2. Components are as per below:
 1. Aluminum & Carpet
 2. Frame (1)
 3. Frame (2)
 4. Anchor bolts - as per clients approval.
 5. Regulation angle.
3. To avoid any complication in installation, better to cross check the fabricated demission for all received Entrance Mat components according to final approved design.
4. Material to be stored in well controlled storage area till the date of installation.



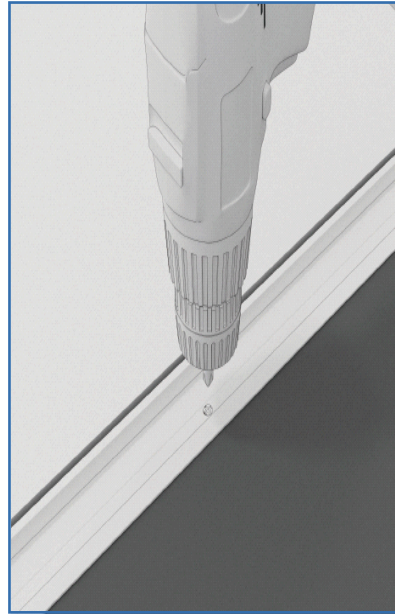
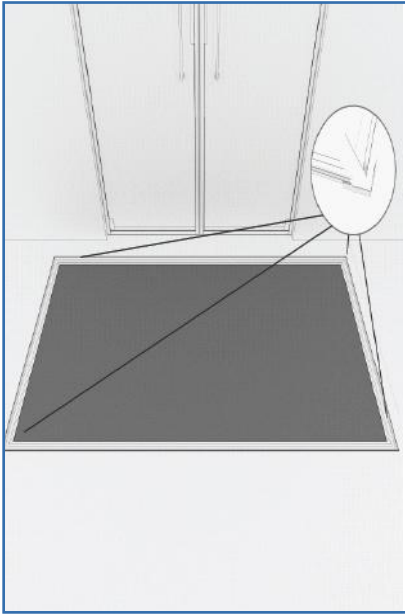
Step 2: Installation Preparation

1. Inspect the installation location which should be in final surface preparation and clean access with dust free.
2. Mark the installation orientation as per below figure (X: Mat grid direction, Y: Walking direction)
3. Confirm the installation depth requirements which should be 24mm (Z : Mat depth).
4. Barricade the working area with safety warning tape to avoid unrequired movements and dirt.



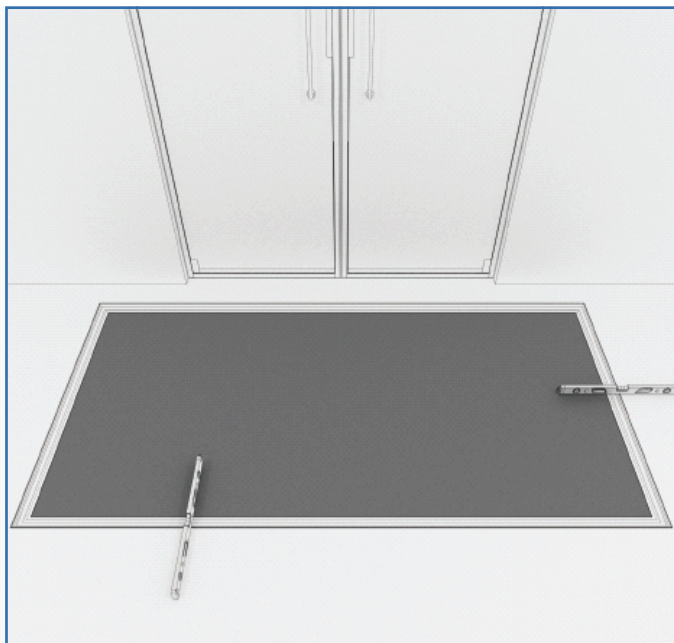
Step 3: Installation Entrance Matt Frame and Supports

1. According to mat design frame installation has to be done by anchor bolts on the finished screed.



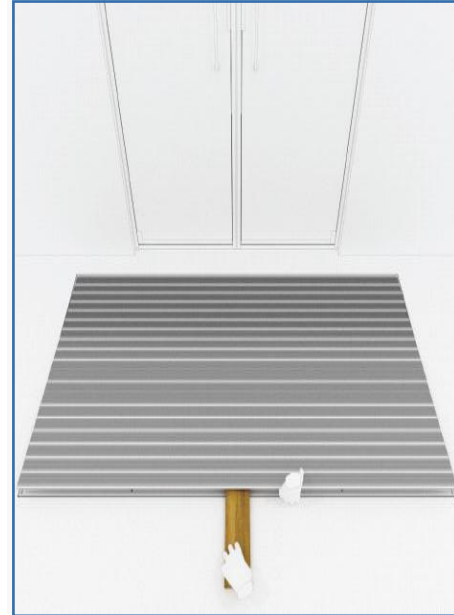
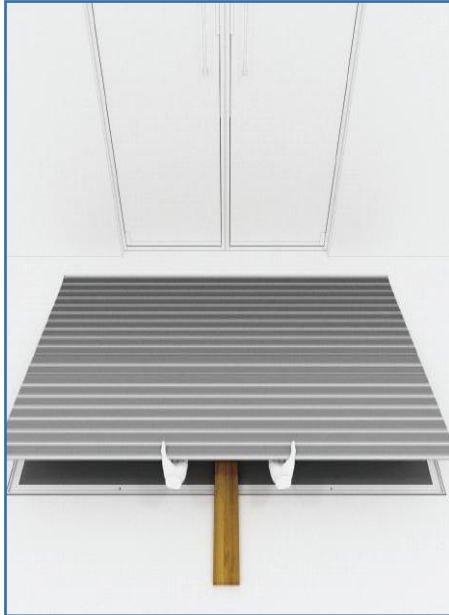
Step 4: Frame & Supports Levelling

1. After frame installation completion, we have to confirm that frame is flat and flush with the surface of finished floor.
2. Final cleaning and clearance from client need to be obtained before final mat installation.



Step 5: Installation of Entrance Matt

1. Once frame confirmed by client, we can install the entrance grids by lifting mat with smooth wooden form.
2. By removing the wooden form we will be completing fixing the mat in the desired frame location.



Step 6: Final Inspection & Handling Over

1. Once installation and leveling completed, you can call for final inspection to verify and confirm that the work has been done as per project scope of work.

