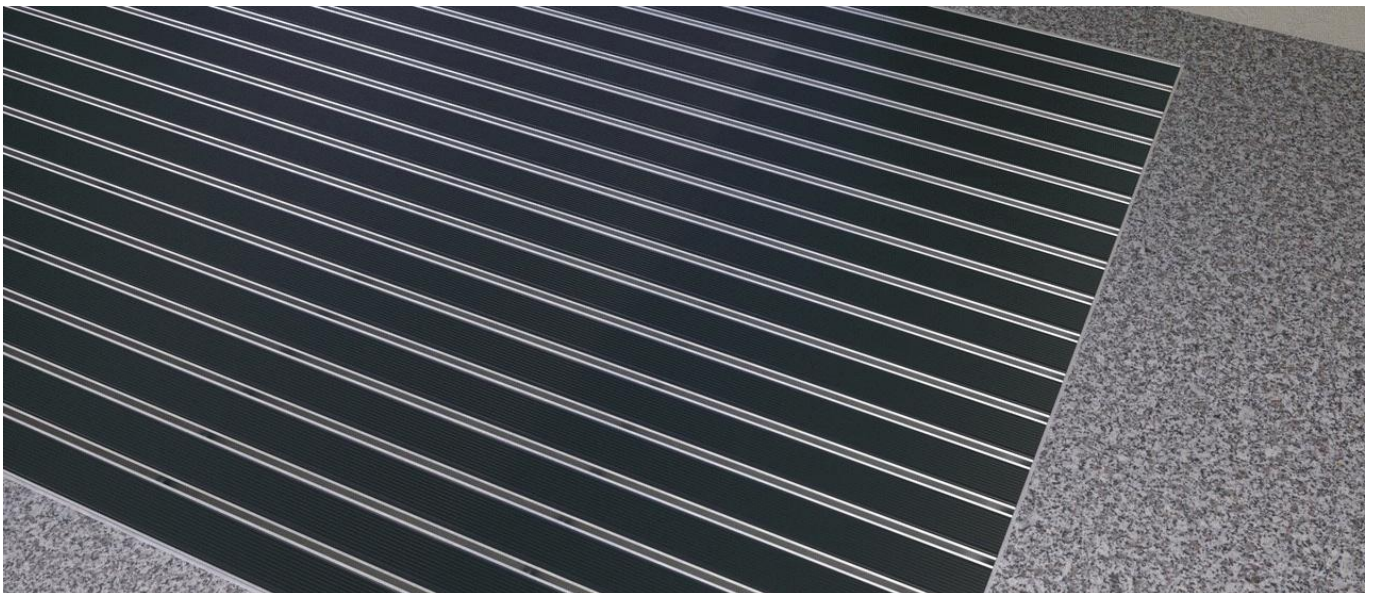
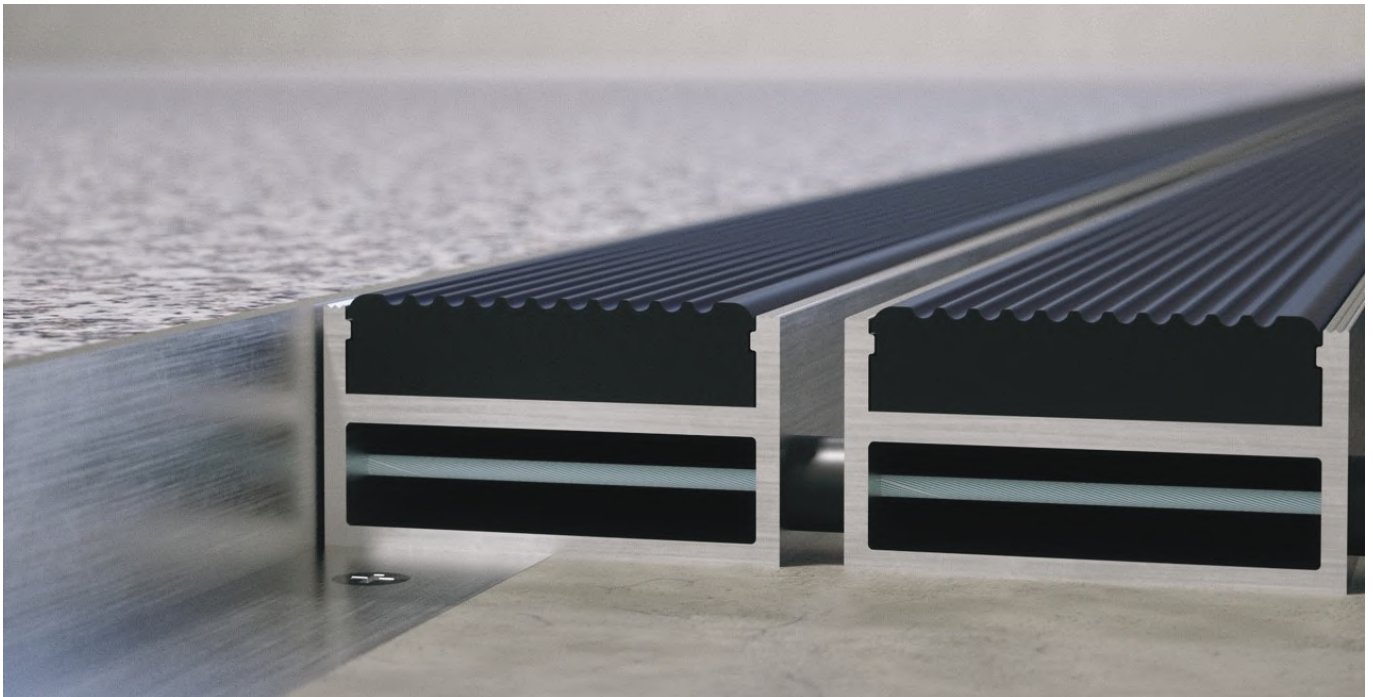


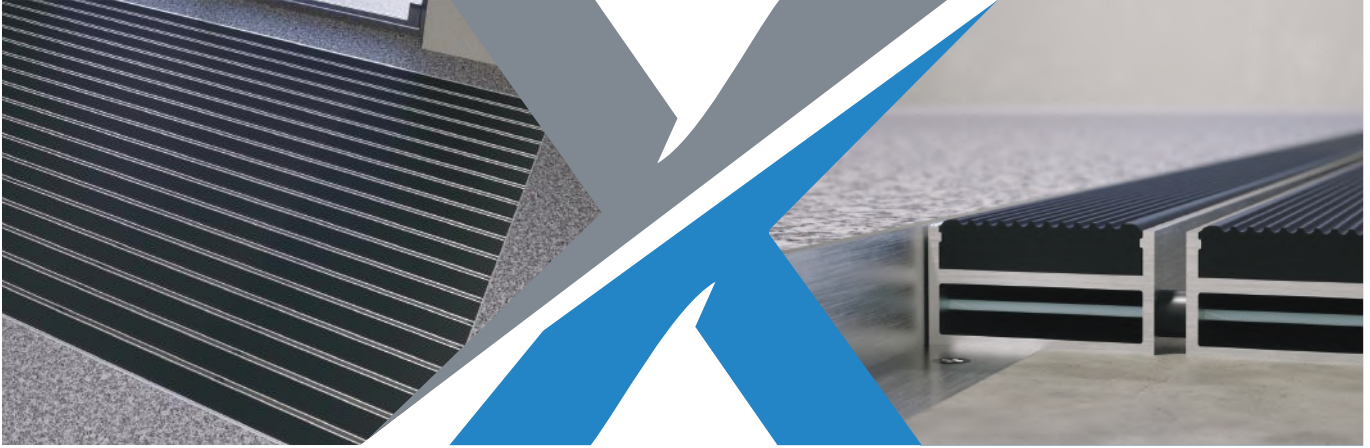
**ANTI-SLIP ALUMINUM RUBBER ENTRANCE MATTING**

**NRFM 13**

**Aluminum-Rubber High Profile**



## NRFM 13



High Profile entrance matting corrosion-resistant version with Neoprene or EPDM rubber inserters can be used for outside as well as inside areas with normal traffic areas. It prevents dirt and moisture from entering the building and is laid on a shock absorbing damping foam. This type reduces noise generated from heavy traffic and is greatly capable of collecting dirt. The panels are connected to each other through a stainless steel wire.

<b>ALUMINIUM PROFILE</b>	Aluminium profile alloy 6063-T6, wall thickness 1.1 mm for laying directly into existing or new matwells.
<b>UPPER</b>	Anti-slip knurled EPDM Rubber or Neoprene, heavy-duty and UV-resistant conforming to DIN 7863.
<b>UNDERNEATH</b>	Base of the mat is mechanically fitted with shock absorbing damping foam. panels are connected with stainless steel wire.
<b>PROFILE COLOURS</b>	Material can be in mill finish aluminum or anodized silver, gold or bronze colors with black rubber insert.



Use in the outside area



Use in the inside area



Wheelchair accessible



Recyclable

