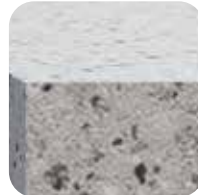
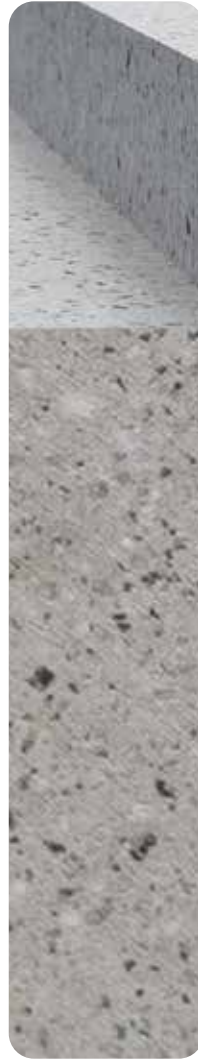
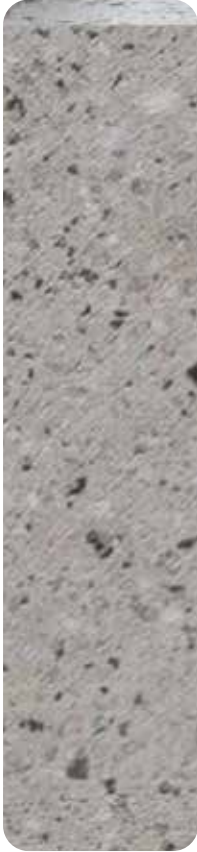


FIRE BARRIER SYSTEM



www.unitech-ikk.com
www.nexus-ikk.com
www.ikkgroup.com



UNITECH

For Building and Construction Materials

FIRE BARRIER SYSTEM

Floor to Floor | Floor to Wall

35 - 350 mm (1.4 - 14") Expansion Joint

NEXUS Fire Barriers for vertical and horizontal expansion joint gaps with minimum movement capacity 50% of the joint width. Designed for Floor to Floor & Floor to Wall Gaps for 2 hours fire rated requirement and suitable for gap widths ranging from 35 - 350mm.

Features

Movement

High movement capacity
UL - 2079

Min 50%

Material

"Sandwich assembly of layers of stainless steel foil and insulation contained in a stainless steel - Standard barrier allows up to 50% lateral shear.

System Options

| | |
|---------------|--|
| Gap width(s) | 35, 50, 100, 150, 200, 250, 300, 350 mm |
| Metal type(s) | Stainless Steel foil |
| Color(s) | Stainless Steel, Standard Color |
| Fire barrier | UL 2079: 120 minutes |
| Accessories | Low Profile Flange, Surface Mount Flange |



Use

Fire Barrier for horizontal expansion joint gaps with minimum movement capacity 50% of the joint width

Material

Protective lamination made of 0.05mm stainless steel AISI 304 with melting point 140°C

Core

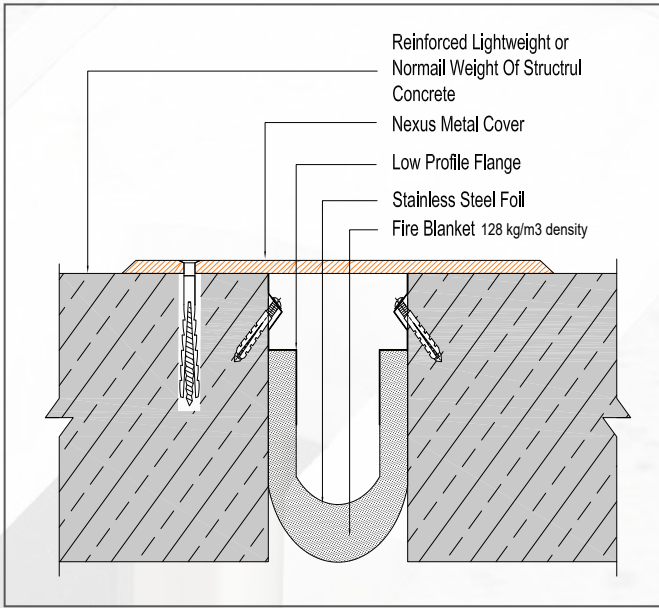
Fire blanket 128kg/m³ density.

Product Length

Standard production length will be 3 meter, and any other length is possible upon request.

Applications

Designed for Floor to Floor & Floor to Wall Gaps For 2 hours Fire rated requirement Suitable for gap sizes from 35 - 350 mm.



Fire Barrier Selection Criteria

Load Rating

Product Details

| Joint Location | Gap Width | Movement Capacity (mm) | | Product Dimension | | Product Dimension | | Remarks |
|------------------------------|-----------|------------------------|-------------------|-------------------|---|-------------------|---|------------|
| | B(mm) | ± | | L.W.H | | Weight kg/LM | | |
| | Code | Gap Size | Movement Capacity | | | | | |
| Floor - Floor | 35 | ± 50% | - | - | - | - | - | NFB - 2FF |
| | 50 | ± 50% | | | | | | NFB - 2FF |
| | 100 | ± 50% | | | | | | NFB - 4FF |
| | 150 | ± 50% | | | | | | NFB - 6FF |
| | 200 | ± 50% | | | | | | NFB - 8FF |
| | 250 | ± 50% | | | | | | NFB - 10FF |
| | 300 | ± 50% | | | | | | NFB - 12FF |
| | 350 | ± 50% | | | | | | NFB - 14FF |
| 2 Hour Fire Rated (120 mins) | | | | | | | | |
| Floor - Wall | 35 | ± 50% | - | - | - | - | - | NFB - 2FW |
| | 50 | ± 50% | | | | | | NFB - 2FW |
| | 100 | ± 50% | | | | | | NFB - 4FW |
| | 150 | ± 50% | | | | | | NFB - 5FW |
| | 200 | ± 50% | | | | | | NFB - 6FW |
| | 250 | ± 50% | | | | | | NFB - 8FW |
| | 300 | ± 50% | | | | | | NFB - 10FW |
| | 350 | ± 50% | | | | | | NFB - 12FW |
| | 200 | ± 50% | | | | | | NFB - 8WC |
| | 250 | ± 50% | | | | | | NFB - 10WC |
| | 300 | ± 50% | | | | | | NFB - 12WC |
| | 350 | ± 50% | | | | | | NFB - 14WC |

Contact Information

Sales Offices/Entities

KINGDOM OF SAUDI ARABIA

unitech.ksa@ikkgroup.com

Jeddah

Tel : +966 12 627 8222

Mak kah/Taif

Tel : +966 12 541 1206

Mad inah

Tel : +966 14 842 1095

Yanbu

Tel : +966 14 390 1499

Khamis Mushayt

Tel : +966 17 237 5929

Gizan

Tel : +966 17 321 6660

Riyadh

Tel : +966 11 292 8200

Qassim / Buraidah

Tel : +966 16 382 3946

Tabuk

Tel : +966 14 423 5203

Dammam

Tel : +966 13 859 0097

Hufuf

Tel : +966 13 530 1474

Jubail

Tel : +966 13 361 4390

UNITED ARAB EMIRATES

Dubai - Al Rashidiyah

unitech.dubai@ikkgroup.com

Tel : +971 4 2591 773

Abu Dhabi - Musaffah

unitech.auh@ikkgroup.com

Tel: +971 2 552 3393

BAHRAIN

Manama

unitech.bahrain@ikkgroup.com

Tel : +973 17 874 897

KUWAIT

Kuwait City

unitech.kuwait@ikkgroup.com

Tel : +965 2 4924 937

OMAN

Muscat

unitech.oman@ikkgroup.com

Tel : +968 24 591 006

QATAR

Doha

info@unitech-qatar.com m

Tel : +974 4451 3301

LEBANON

Beirut

unitech.lebanon@ikkgroup.com

Tel : +961 1 858 277

EGYPT

Cairo 6th of October City

unitech.egypt@ikkgroup.com

Tel : +20 2 3820 6477

PAKISTAN

Lahore

unitech.pakistan@ikkgroup.com

Tel : +92 42 3230157

SFSP Factories

SFSP - KSA

Specialized Factory for Steel Products

sfsp.jeddah@ikkgroup.com

3rd Industrial City / Jeddah

Tel: +966 12 637 4482

SFSP / UAE

SIGMA Factory for Steel Products

sfsp.uae@ikkgroup.com

DIC (Dubai Industrial City)

Tel : +971 4 818 1919

SFSP / EGYPT

Specialized Factory for Steel Products

sfsp.cairo@ikkgroup.com

6th of October City Giza

Tel : +20 2 3820 6477

SFSP / LEBANON

Specialized Factory for Steel Products / s.a.r.l

sfsp.lebanon@ikkgroup.com

Tanayel, Bekaa

Tel: +961 8 514 290

Engineering & Design

GERMANY

unitech.germany@ikkgroup.com

Unitech Deutschland GmbH

Stuttgart, Germany

Tel : +49 711 6868 7222

Marketing & Multimedia

Multi-D s.a.r.l

multi-d@ikkgroup.com

Multi-D

Beirut, Lebanon

Tel : +961 1 841 155