



Classified In Progress 2hrs Fire Rated
 Project Number: 4789309812
 4790099732

Features

Movement

High movement capacity ASTM E-1399 UL - 2079	Min 50%
--	---------

Material

“Sandwich” assembly of layers of stainless steel foil and insulation contained in a stainless steel - Standard barrier allows upto 50% lateral shear.

System Options

Gap width(s)	35, 50, 100, 150, 200, 250, 300, 350 mm
Height(s)	Not applicable
Metal type(s):	Stainless Steel foil
Colour(s)	Stainless Steel, Standard Colour
Fire barrier	UL 2079: 120 minutes
Accessories	Low Profile Flange, Surface Mount Flange

FIRE BARRIER SYSTEM

Floor to Floor | Wall to Wall
 35 - 350 mm (2" - 14") Expansion Gaps

Nexus Fire NFB: Barrier

A01- Floor to Floor
 A02 - Floor to Wall
 A03 - Wall to Wall
 A04 - Wall Corner



Use:
 Fire Barrier for vertical and horizontal expansion joint gaps with minimum movement capacity 50% of the joint width

Material:
 Protective lamination made of 0.05mm stainless steel AISI 304 with melting point 1400C

Core:
 Fire blanket 128kg/M3 density.

Product length:
 Standard production length will be 7meter
 Other length possible upon request

APPLICATIONS

Designed for Floor & Wall Gaps
 For 2 hours Fire rated requirement
 Suitable for gap sizes from 50 - 350 mm
 2" - 14"

FIRE BARRIER SYSTEM

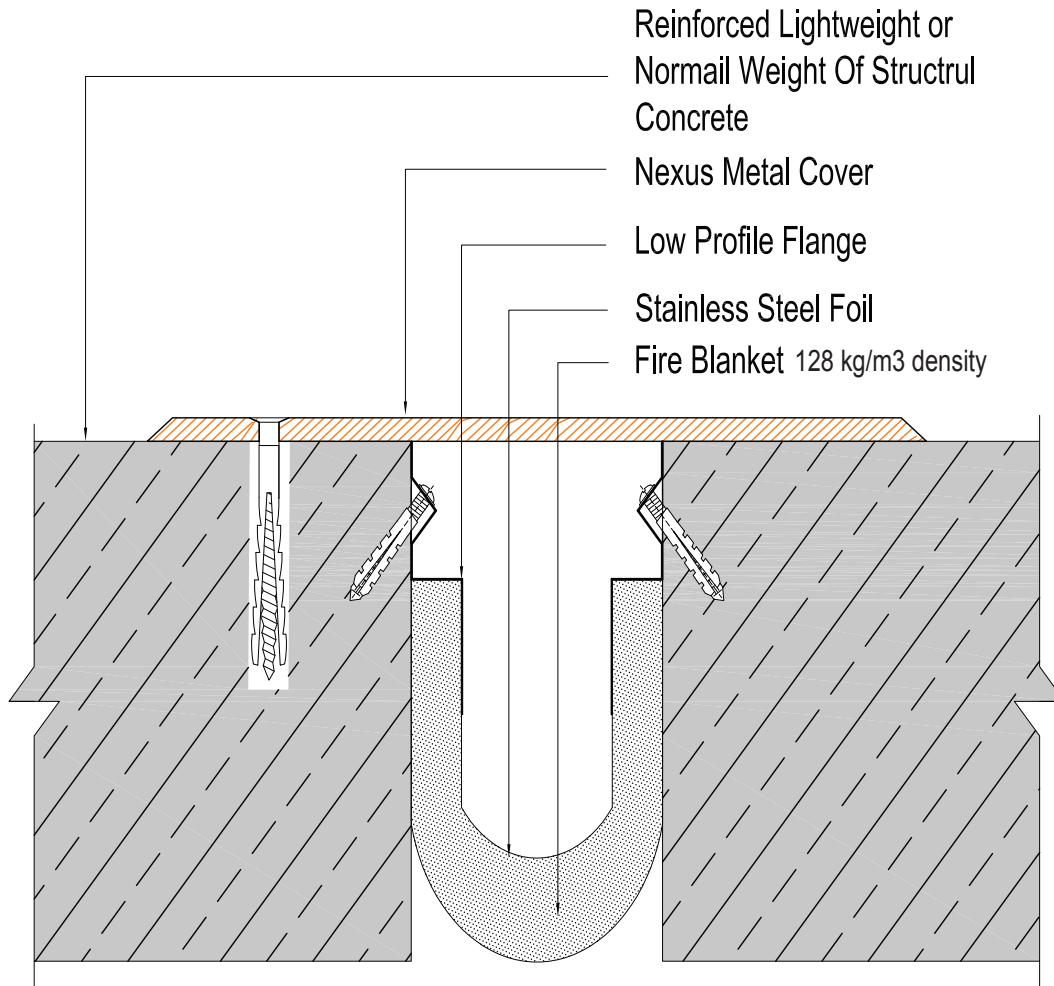
Floor to Floor | Wall to Wall

50 - 400 mm (2 - 16 ") Expansion Gaps



Classified
In Progress 2hrs Fire Rated
Project Number: 4789309812
4790099732

Nexus Fire NFB



Fire Barrier Selection Criteria

Load Rating

Product Details

Joint Location	Gap Width B(mm)	Movement Capacity (mm)		Product Dimension L.W.H		Product Dimension Weight kg/LM		Remarks
		±	±					
Floor - Floor	35	± 50%						NFB - 2FF
	50	± 50%						NFB - 2FF
	100	± 50%						NFB - 4FF
	150	± 50%						NFB - 6FF
	200	± 50%	-	-	-	-	-	NFB - 8FF
	250	± 50%						NFB - 10FF
	300	± 50%						NFB - 12FF
	350	± 50%						NFB - 14FF

2 Hour Fire Rated (120 mins)								
Floor - Wall	35	± 50%						NFB - 2FW
	50	± 50%						NFB - 2FW
	100	± 50%						NFB - 4FW
	150	± 50%						NFB - 5FW
	200	± 50%	-	-	-	-	-	NFB - 6FW
	250	± 50%						NFB - 8FW
	300	± 50%						NFB - 10FW
	350	± 50%						NFB - 12FW

2 Hour Fire Rated (120 mins)								
Wall - Wall	35	± 50%						NFB - 2WW
	50	± 50%						NFB - 2WW
	100	± 50%						NFB - 4WW
	150	± 50%						NFB - 6WW
	200	± 50%	-	-	-	-	-	NFB - 8WW
	250	± 50%						NFB - 10WW
	300	± 50%						NFB - 12WW
	350	± 50%						NFB - 14WW

2 Hour Fire Rated (120 mins)								
Wall - Corner	35	± 50%						NFB - 2WC
	50	± 50%						NFB - 2WC
	100	± 50%						NFB - 4WC
	150	± 50%						NFB - 6WC
	200	± 50%	-	-	-	-	-	NFB - 8WC
	250	± 50%						NFB - 10WC
	300	± 50%						NFB - 12WC
	350	± 50%						NFB - 14WC