



NEXUS

Expansion & Movement Joint Systems

Expansion & Movement Joint Systems



Installation Instructions

Model NFB

July 2020



Model **NFB**



PLEASE READ THOROUGHLY THIS ENTIRE DOCUMENT BEFORE INITIATING THE WORK

Initial **CHECKLIST**

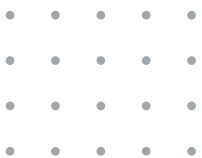
- Inspect Material supplied, for any damage or defects. If any flaw is found, please contact Nexus' local supplier at the earliest.
- Check that all Material mentioned in this document, were delivered by Nexus' local supplier.
- Take note of all tools, accessories and equipment before starting the job. If any is missing, please procure the missing elements or contact Nexus' local supplier for assistance.
- The site condition, approved shop drawings, the material supplied and the installation instructions should be matching. If any ambiguity please contact Nexus' supplier for assistance
- All elements should be stored, until assembly, in a clean and dry location.

Model NFB



A. Material and Tools preparation

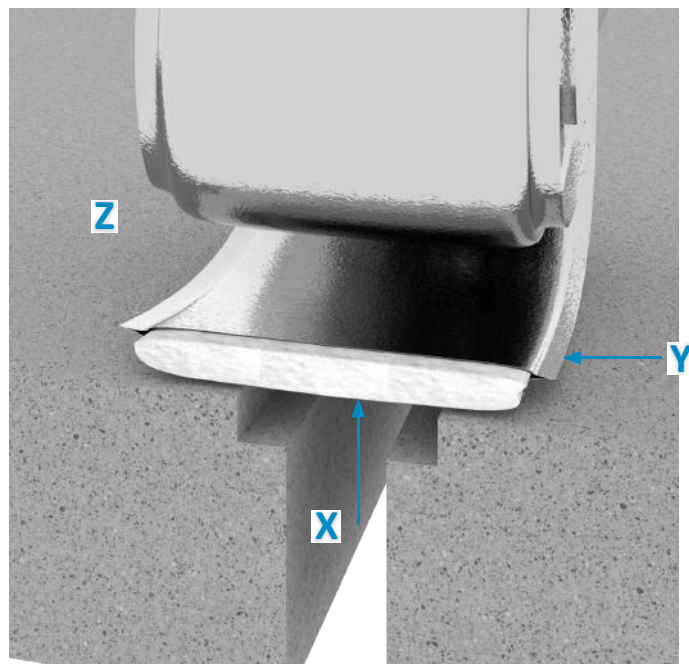
1. Familiarize yourself with the different components of this model.
2. Lay the different components on the ground as per the succession of installation.
3. Take physical measurements of the joints and cross check them with the delivered material.
4. Take note of all the tools required for a perfect application, and make sure they are available.
5. Personal Protection Equipment (PPE) and safety protocols have to be followed in accordance with the HSE department guidelines.
6. Each fire barrier rolled in one carton with maximum possible length.
7. Each carton contains one full set for splicing.
8. Screws or fixing bolts are not included.
9. GI flange / profile are pecked separately.



B. Site Preparation

1. Accessibility to an uninterrupted clean area, free of oils and dust, has to be provided by the Main Contractor (MC).
2. Unpack the carton and remove the fire barrier
3. Roll out the fire barrier and make sure that UL label is facing up.
4. Conduct visual inspection for the fire barrier after full unpacking and rolling out and report for any damages
5. The insulation part of the fire barrier (fire blanket) should be inserted in the center of expansion joint to form “ U “ or “ V “ shape to facilitate the installation work.

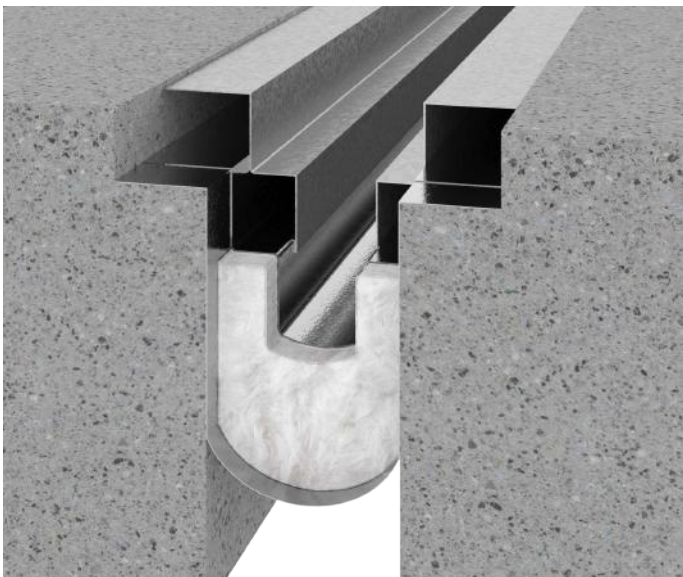
- X. Crease at center of the fire barrier blanket to facilitate insulation
- Y. Seam Weld
- Z. Roll out the Fire Barrier



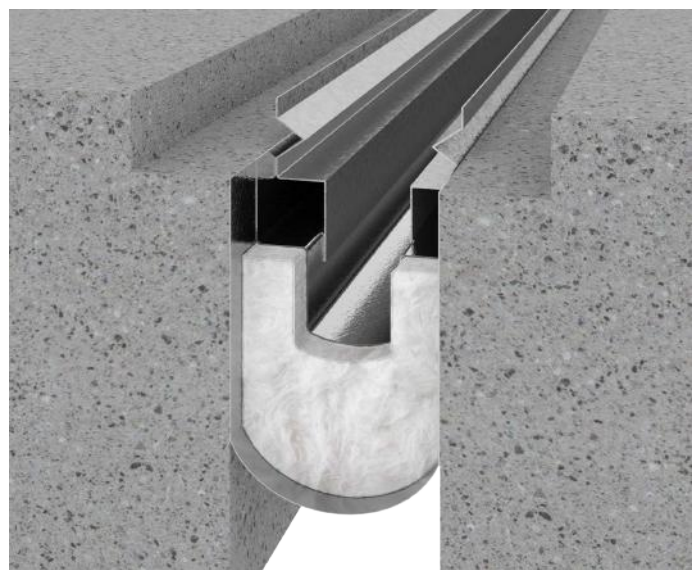
C. Floor to Floor - Installation Steps

1. Place the fire barrier in the expansion joint.
3. The Low Profile (LP) galvanized flange, the foil flanges can be folded along the seam weld line down inside the expansion joint void so that no part of the barrier is on the exposed surface of the floor
4. The surface mount galvanized flange, the foil flanges can be folded along the seam weld line onto the exposed face of concrete slab.

SURFACE MOUNT
FLANGE



LP FLANGE

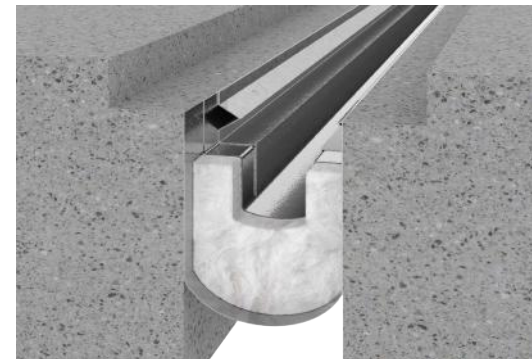
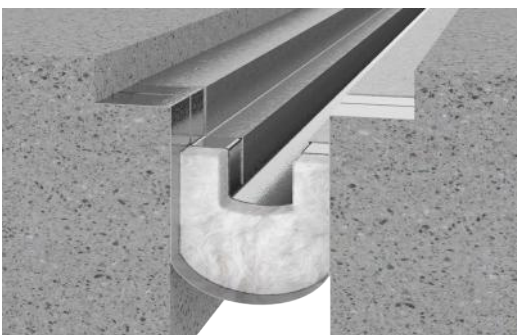
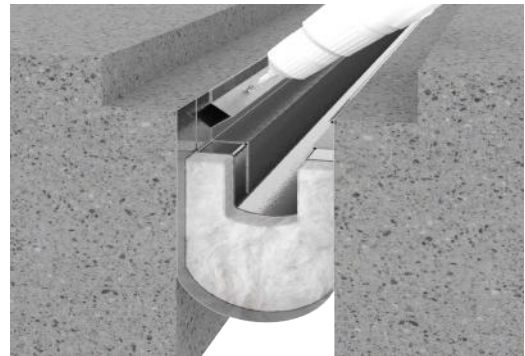
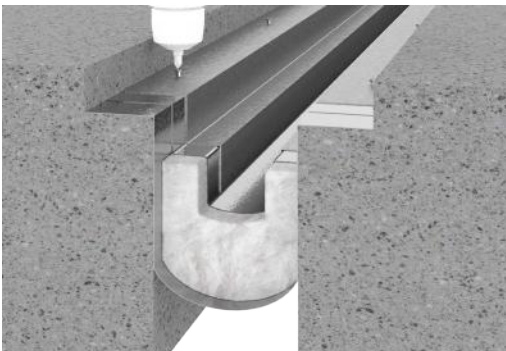
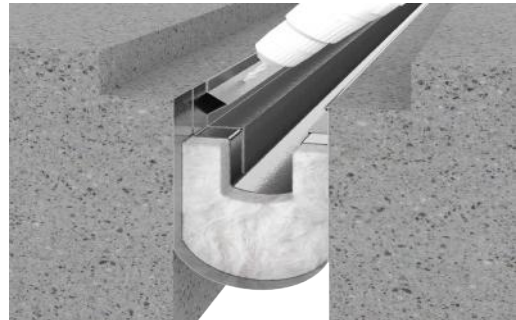
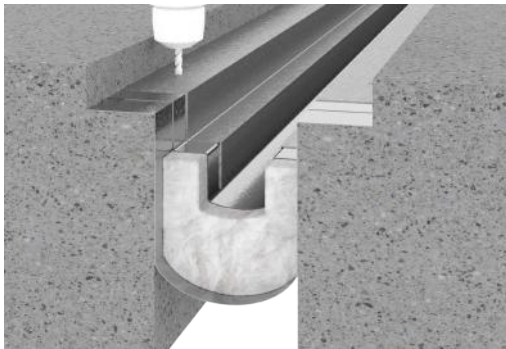


Model NFB



D. Floor to Floor - Profile Installation

1. Cut the galvanized flanges to length and drill appropriate size holes with maximum spacing of 18”.
2. Install the flanges with appropriate fasteners as shown.
3. Install the expansion joint covers (reference expansion joint cover instructions) over the joint or in the blockout with appropriate fasteners.

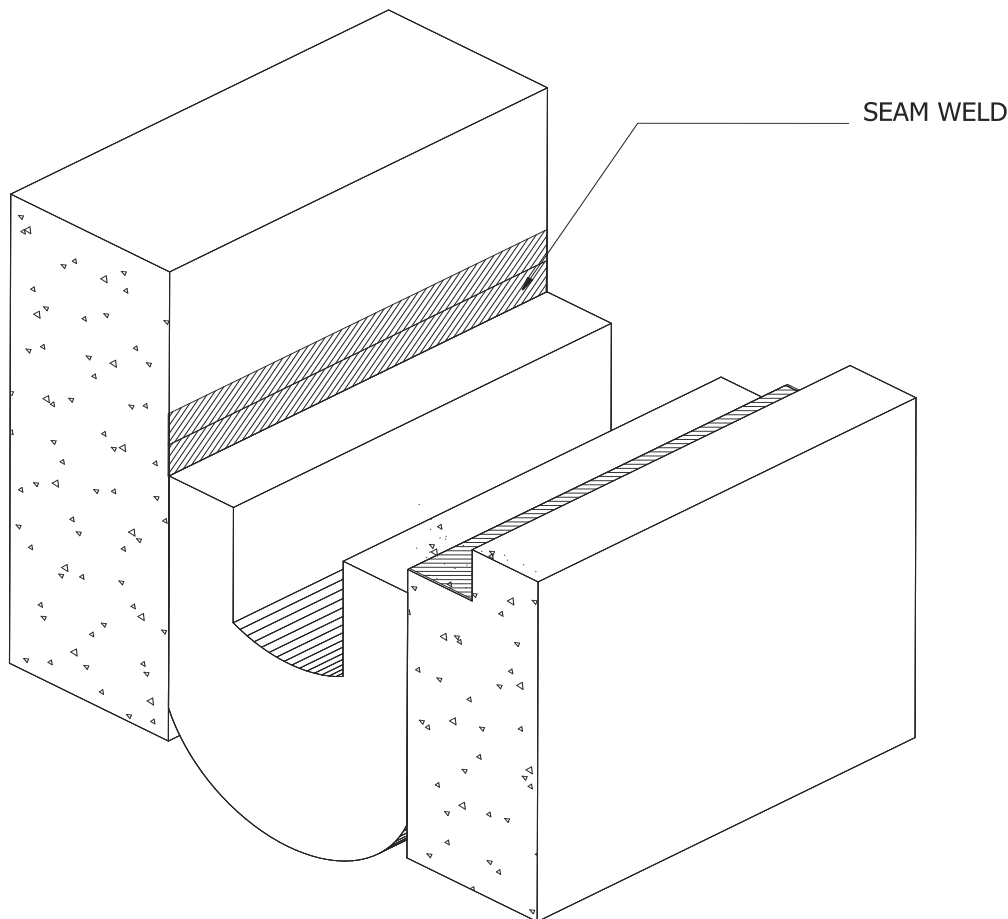


SURFACE MOUNT
FLANGE

LP FLANGE

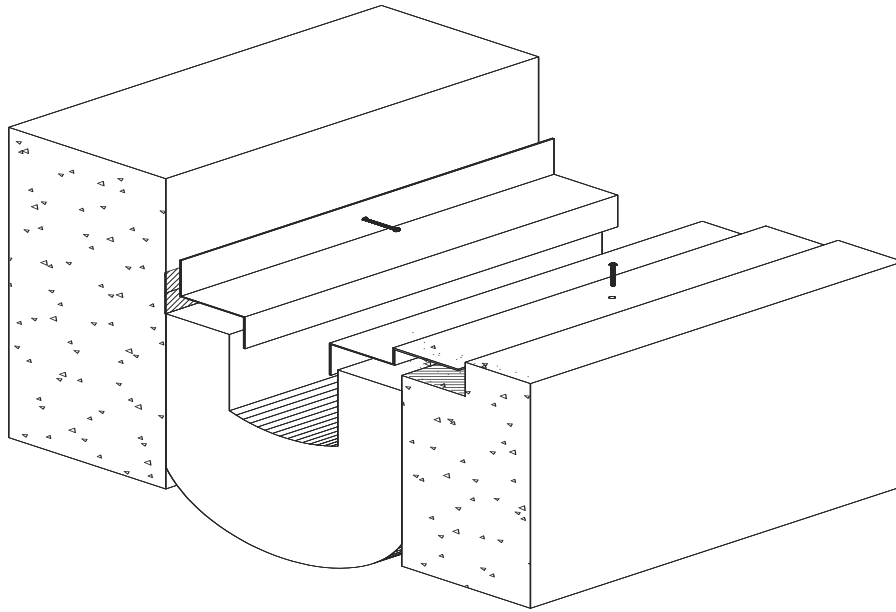
E. Floor to Wall - Installation Steps

1. Place the fire barrier in the expansion joint.
2. The foil flanges should be folded along the seam weld line onto the exposed face of the floor slab.
3. The foil flange can be run up the wall on the other side of the joint
4. The Low Profile (LP) galvanized flange configuration on the wall side, the foil flange can be folded over itself before the galvanized flange is fastened into place



F. Floor to Wall - Profile Installation

1. Cut the galvanized flanges to length and drill appropriate size holes with maximum spacing of 18”.
2. Install the flanges with appropriate fasteners as shown.
3. Install the expansion joint covers (reference expansion joint cover instructions) over the joint or in the blockout with appropriate fasteners.



G. Wall to Wall - Installation Steps

1. Place the fire barrier in the expansion joint.
2. The foil flanges can be entirely on the exposed surface of the wall for the Surface Mount galvanized flange.
3. With the Low Profile (LP) galvanized flanges, the foil flanges can be inside the joint cavity so that no part of the barrier is on the exposed surface of the wall.

SURFACE MOUNT
FLANGE



LP FLANGE

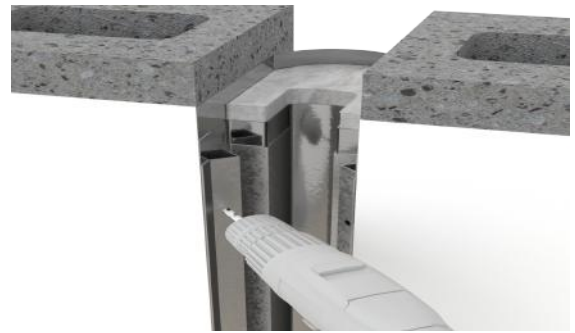


Model NFB



H. Wall to Wall - Profile Installation

1. Cut the galvanized flanges to length and drill appropriate size holes with maximum spacing of 18”.
2. Install the flanges with appropriate fasteners as shown.
3. Install the expansion joint covers (reference expansion joint cover instructions) to either side or both sides of the wall when accessible with appropriate fasteners.



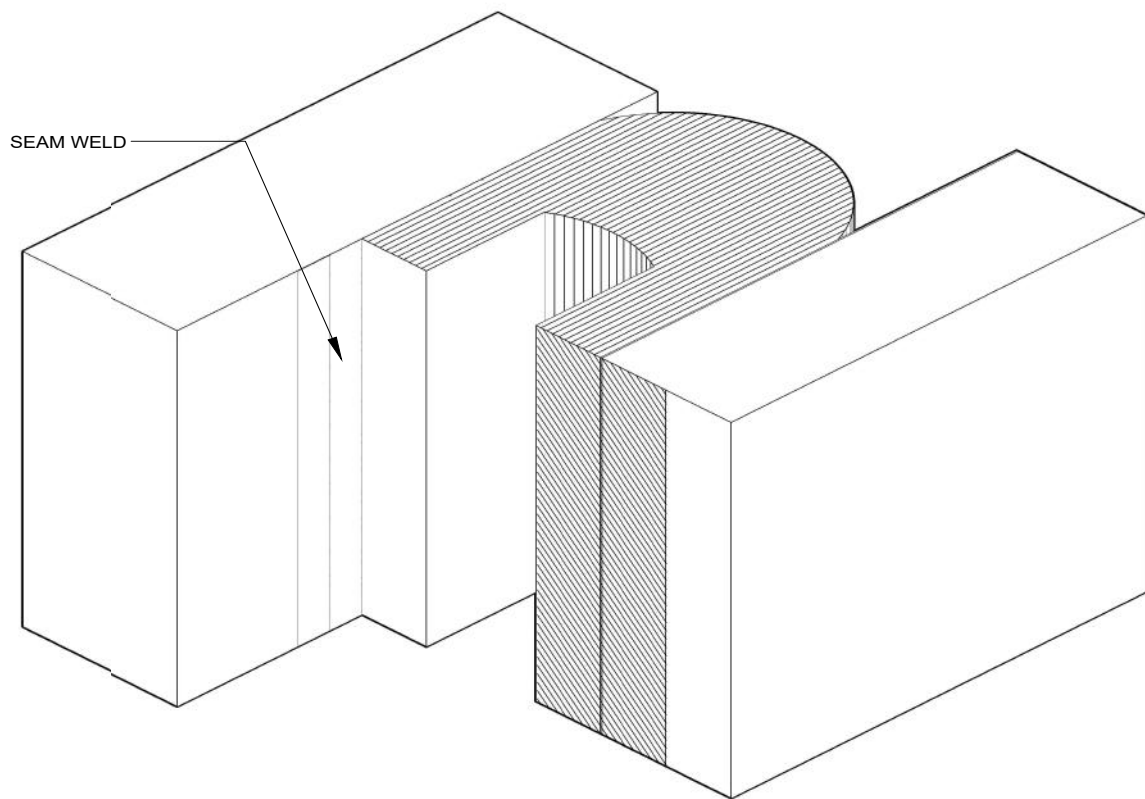
SURFACE MOUNT
FLANGE



LP FLANGE

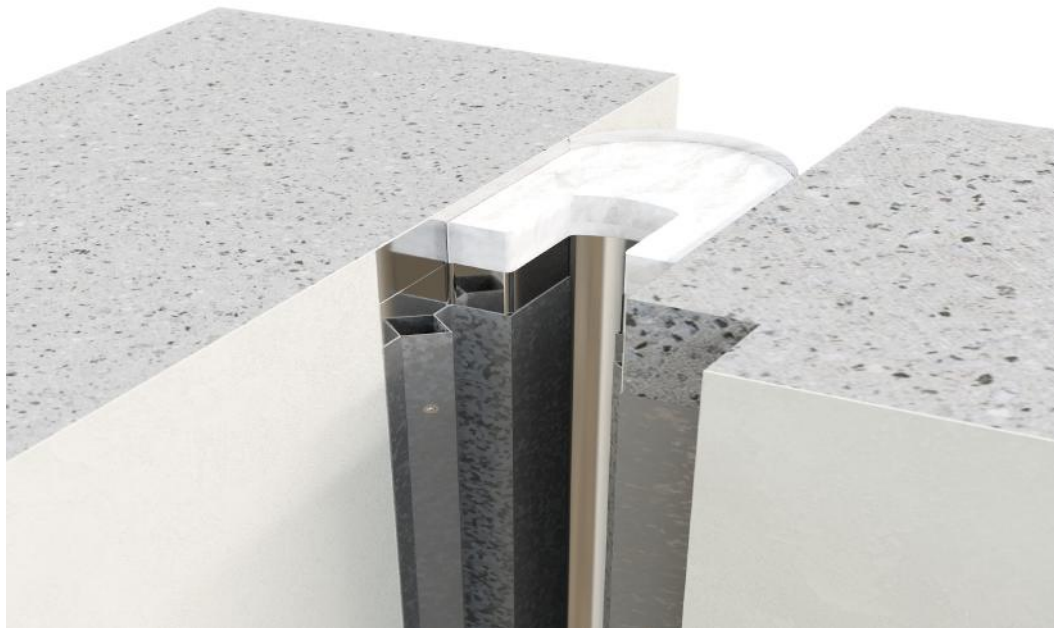
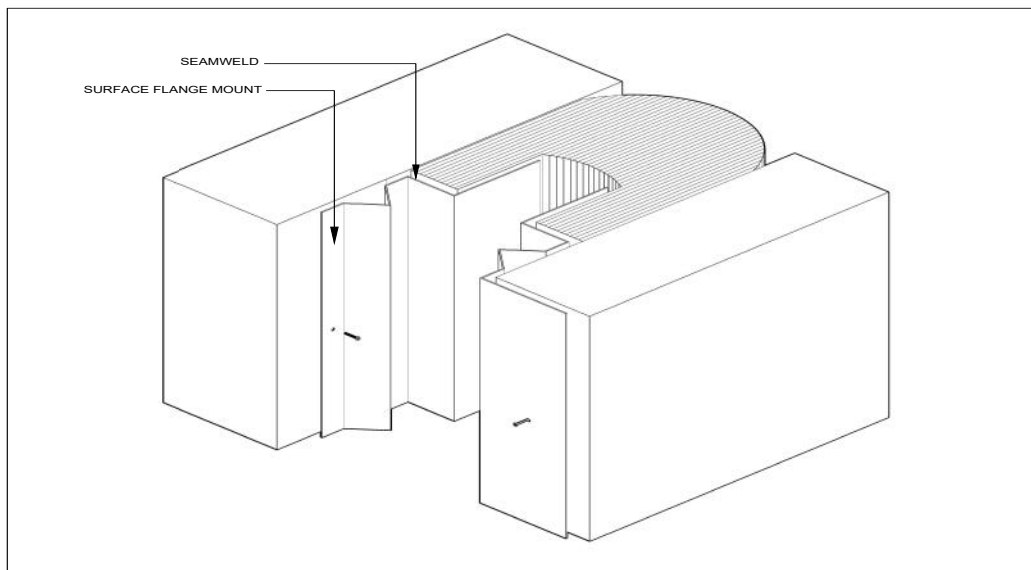
I. Wall to Corner - Installation Steps

1. Place the fire barrier in the expansion joint.
2. The foil flanges should be folded along the seam weld line onto the exposed face of the wall.
3. The foil flange can be run up the wall on the other side of the joint
4. The Low Profile (LP) galvanized flange configuration on the wall side, the foil flange can be folded over itself before the galvanized flange is fastened into place.



J. Wall to Corner - Profile Installation

1. Cut the galvanized flanges to length and drill appropriate size holes with maximum spacing of 18”.
2. Install the flanges with appropriate fasteners as shown.
3. Install the expansion joint covers (reference expansion joint cover instructions) to either side or both sides of the wall when accessible with appropriate fasteners.



Model NFB



Final Checklist

- The work has been completed in accordance with approved shop drawings and these installation instructions.
- Check that there are no missing elements or loose applications.
- The applied system should be protected from any hazard, until final approval.

